

NEWSFLASH



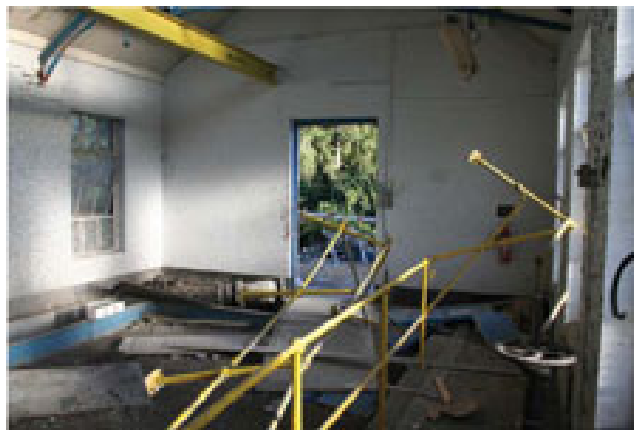
R G WILBREY (CONSULTANTS) LIMITED

FOAM CONCRETE CONTAINING IBA (INCINERATOR BOTTOM ASH)

At least two contractors - Barhale and Enterprise - have banned foam concrete containing IBA from all their sites; with others understood to be following suit, following blasts that are thought to be linked to IBA in foam concrete. It is thought that the IBA within the concrete reacted to cause Hydrogen Gas.

The product is widely used in the industry - most commonly in utility trench filling and road construction.

The Health & Safety Executive said it has launched an investigation into the two blasts. In one incident two workers sustained fractures to the ankle and foot.



Barhale – Decommissioning of Pumping Station Thames Water Blast

Always seek confirmation from the supplier that the materials used are inert and will not produce gas emissions when mixed. We advise caution with IBA (incinerator bottom ash) in foam concrete until HSE confirm their findings and if in any doubt, contact your foam concrete supplier for certification of materials types and sources before commencing work.